

# CERTIFICATE OF LOCATION OF GOVERNMENT CORNER

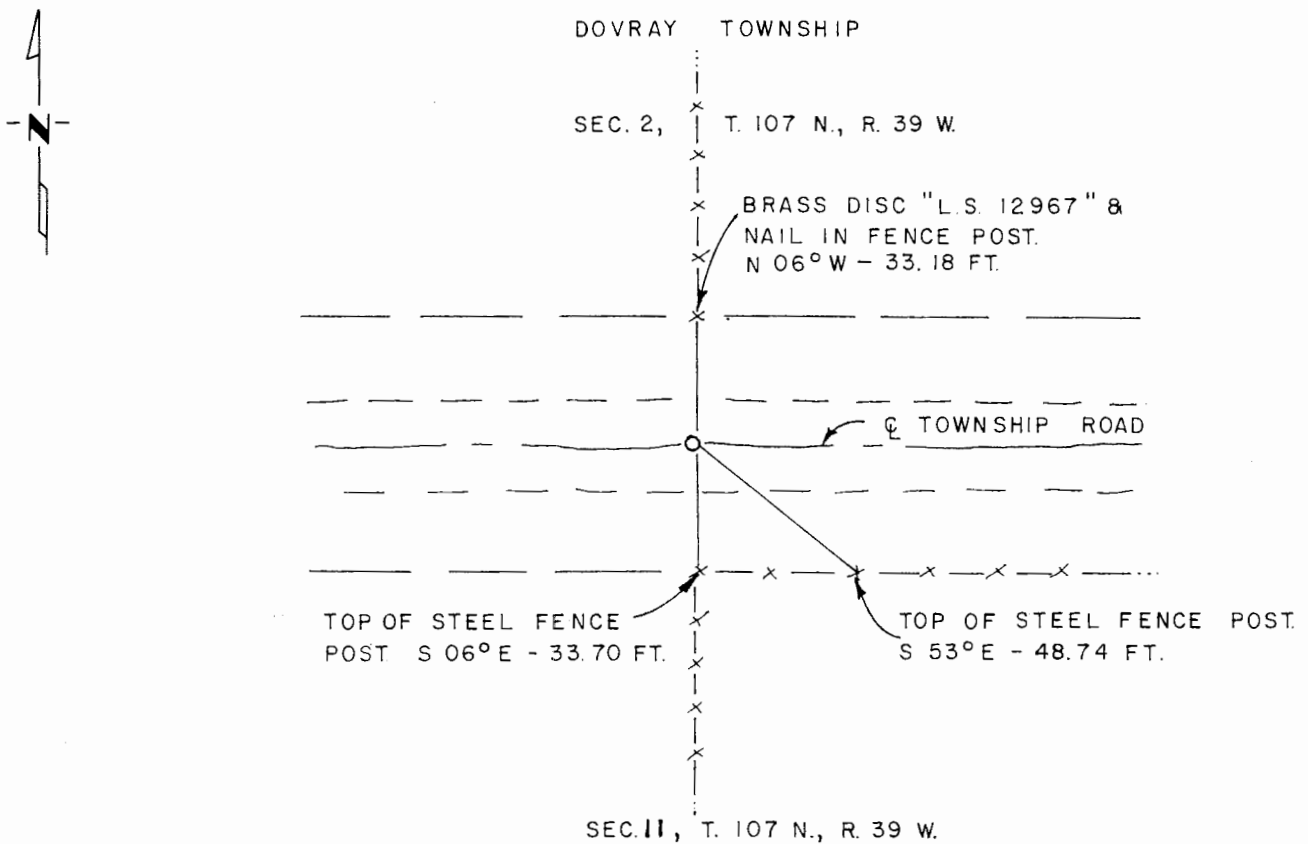
South Quarter Corner of Section 2, Township 107 N., Range 39 W., 5th P.M.

STATE OF MINNESOTA, County of Murray

At the corner location shown on the sketch:

- On Sept. 9, 1980 found a field stone; stone was on the ☉ of the Township Road & on the fence line extensions north & south.
  - left monument as found,  lowered monument,  removed monument (explain)
- On Sept. 9, 1980 placed a 1/2" iron reinforcing bar with "L.S. 12967" cap over the field stone.

### SKETCH OF REFERENCE TIES



I hereby certify that this document and the data contained herein was prepared by me or under my direct supervision.

*Way D. N. Put*      12/20/81  
SIGNATURE      DATE

Registration No. 12967

- Land Surveyor,  Professional Engineer
- County Surveyor,  County Engineer

### OFFICE OF THE COUNTY RECORDER

County of Murray

I hereby certify that this document was filed in the Co. Recorders office at 10 A.M. on the 18th day of February A.D. 19 82

County Recorder *Willard W. Ohme*

By \_\_\_\_\_, Deputy

DOCUMENT NO. \_\_\_\_\_